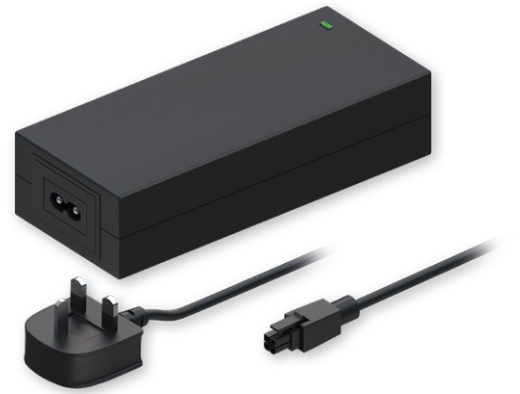


# UK POWER SUPPLY 62.4 W



## TECHNICAL DATA

### GENERAL

Input voltage	100 - 240 VAC
Input frequency	50 / 60 Hz
Input current	1.5 A
Input connector	UK (Type G)
Output voltage	48 VDC
Output current	1.3 A
Output connector	4-pin, 3 mm pitch
Weight	380 g

### ADDITIONAL

Input voltage range	90 - 264 VAC
Input frequency range	47 - 63 Hz
Maximum input inrush current	50 A
Output voltage maximum deviation	45.6 - 50.4 VDC
Short circuit protection	✓
HIPOT (dielectric withstand test)	Primary to Secondary: 4000 VDC
MTBF	50000 h

**Safety:** IEC/EN 61558-1:2005+A1:2009, IEC/EN 61558-2-16:2009+A1:2013 (CB Scheme)  
**EMC:** EN 55032:2012+AC:2013, EN 61000-3-2:2014, EN 61000-3-3:2013, EN 55024:2010+A1:2015

Certification

