

OTD500

OUTDOOR 5G ROUTER



OTD500 360° VIEW

The OTD500 is a durable 5G outdoor router built for reliable connectivity in demanding environments. Its IP55-rated housing withstands harsh conditions, and the integrated mounting bracket enables quick, hassle-free installation. Dual SIM and eSIM with automatic switching provide exceptional network flexibility and redundancy. Gigabit Ethernet ports with PoE-in and PoE-out simplify setup by combining power and data in a single cable. Fully RMS-compatible, the OTD500 offers effortless remote management, making it perfect for outdoor connectivity solutions.

IP55

IP55 durability for outdoor deployment

CONNECTIVITY

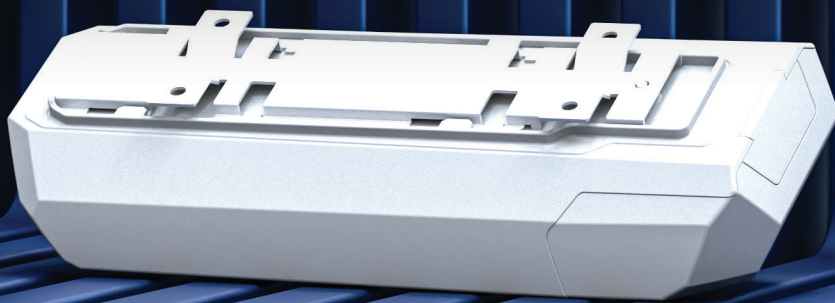
5G, 4G cat 19, 3G

eSIM™

Seamless connectivity with eSIM™ SGP.22

POE-IN/OUT

1x PoE-in and 1x PoE-out port



RMS

REMOTE MANAGEMENT SYSTEM

COMPATIBLE WITH OTD500

MANAGEMENT

ALERTS

CONFIGURATION

ACCESS

FOTA

KEY FEATURES

HARDWARE

Mobile	5G Sub-6Ghz SA/NSA 2.4/3.4Gbps DL (4x4 MIMO), 900/550 Mbps UL (2x2); 4G (LTE) – LTE Cat 19 1.6Gbps DL, Cat 18 200Mbps UL; 3G – 42 Mbps DL, 5.76Mbps UL
eSIM	Consumer type eSIM, profile download and removal operations, up to 7 eSIM profiles; does not include data plans
CPU	MediaTek, Dual-Core, 880 MHz, MIPS1004Kc
RAM	256 MB DDR3
Storage	16 MB serial NOR flash, 256 MB serial NAND flash
TPM	Identification and authentication module, TPM 2.0 standard
Powering options (PoE In)	RJ45, PoE In: 802.3af/at (42.5 – 57 VDC, max 23W)
PoE Out	PoE Out: 802.3af (42.5 – 57 VDC, max 15W) Alternative B
SIM	2 x SIM slots (Mini SIM – 2FF), 1.8 V/3 V
Antenna connectors	4 x internal antennas
Ethernet	2 x RJ45 ports, 10/100/1000 Mbps: 2 x ETH ports (configurable as WAN)
Status LEDs	3 x Mobile connection type, 3 x Mobile connection strength, 4 x ETH status LEDs
Operating temperature	-40 °C to 55 °C
Housing	Plastic (PC+ASA)
Dimensions (W x H x D)	110 x 49.30 x 235 mm
Weight	385 g

SOFTWARE

Operating system	RutOS (OpenWrt based Linux OS)
Mobile features	SIM switch, Status, SMS, USSD, Black/White list, Multiple PDN, Band management, SIM idle protection service, SIM PIN code management, APN, Bridge, Passthrough, Framed routing
Network features	Routing, VoIP passthrough support, Connection monitoring, Firewall, Firewall status page, Ports management, Network topology, Hotspot, DHCP, QoS / Smart Queue Management (SQM), DNS over HTTPS, DDNS, Network backup, Load balancing, SSHFS, VRF support , Traffic Management
Security	Authentication, Firewall, Attack prevention, VLAN, Mobile quota control, WEB filter, Access control, TPM, SSL certificate generation, 802.1x
VPN and tunneling	OpenVPN, OpenVPN Encryption, IPsec, GRE, PPTP, L2TP, Stunnel, DMVPN, SSTP, ZeroTier, WireGuard, Tinc, Tailscale
Monitoring and Management	WEB UI, FOTA, SSH, SMS, Call, Email, TR-069, MQTT, SNMP, JSON-RPC, RMS
Cloud solutions	RMS, ThingWorx, Cumulocity - Cloud of Things, Azure IoT Hub, AWS IoT Core
Services	OPC UA, Modbus, Data to Server, Modbus MQTT GATEWAY, DNP3, DLMS, RMS API

FRONT VIEW

