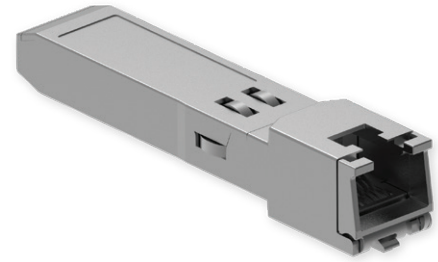


# 1.25 Gb/s COPPER RJ45 SFP TRANSCEIVER



## TECHNICAL DATA

### GENERAL

DS-SFP191X-ERE0\_RJ45 SFP

Connector	RJ-45
Supported media	Single-mode fiber
Data rate	1.25 Gb/s
Max. power consumption	2.0 W
Cable distance	Up to 100 m
Operating humidity	5 to 95 %
Temperature range	0°C ~ +70°C
Case	Fully metallic enclosure for low EMI
RoHS	✓
REACH	✓

Caution: Power consumption and surge current are higher than the specified values in the SFP MSA.

