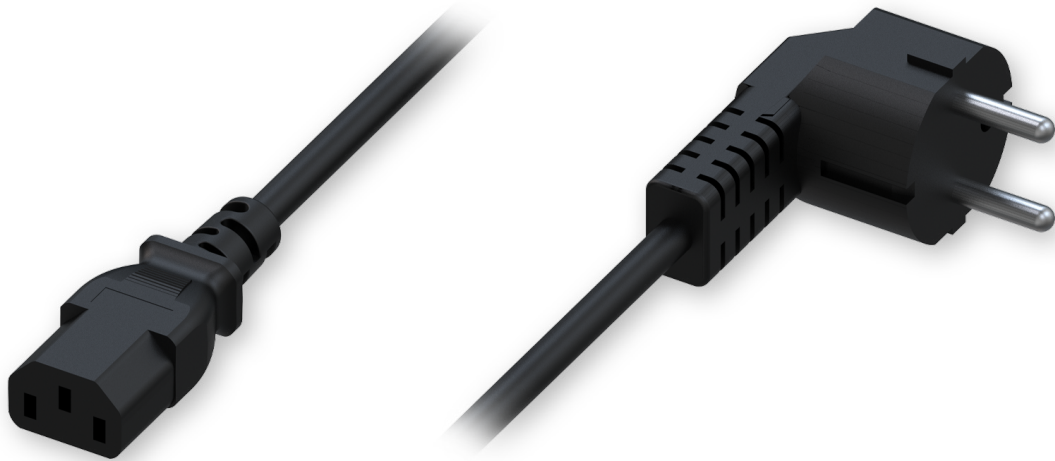


EU POWER CORD



Technical data

Input connector	Type F plug
Input voltage max	250 VAC
Output connector	C13 Plug
Conductor cross section	3 x 0.75 mm ² (18 AWG)
Maximum current	10 A
Weight	155 g
Total length	1200 mm
Protection material	PVC BLACK
RoHS compliant	✓

Spatial measurements

