



TELTONIKA ModemCOM/G10 (CM1100)

User Manual V0.1



Table of Contents

TABLE OF CONTENTS.....	2
1. ATTENTION.....	3
2. SAFETY INSTRUCTION.....	3
3. LEGAL NOTICE.....	5
4. INTRODUCTION.....	5
5. PACKAGE CONTENTS.....	5
6. TECHNICAL SPECIFICATIONS.....	6
6.1 Data transferring.....	6
6.2 Mechanical specifications.....	6
6.3 Electrical and operating specifications.....	6
6.4 Indication.....	7
6.5 Pins of DB9 (COM) connector.....	9
7. MODEM SETUP.....	10
7.1 Connecting to the computer.....	10
7.2 Installation of “Modem Control Tool”.....	10
7.3 Setting up an Internet connection.....	13
7.4 Sending Short Text Messages (SMS).....	16
7.5 Changing security settings.....	17
8. ACRONYMS.....	21
9. TECHNICAL SUPPORT.....	22

1. ATTENTION



Do not rip the device. Do not touch the device if the device is broken or his connecting wires are without isolation



All wireless devices for data transferring may be susceptible to interference, which could affect performance.



Only qualified personnel may install or repair this product.



Your device is not water-resistant. Keep it dry.

2. SAFETY INSTRUCTION

General safety requirements

In this document you will be introduced how to use the “ModemCOM/G10” device safely. You will avoid dangerous situations and harming of yourself if you stick to these requirements and recommendations. You have to be familiar with the safety requirements before starting using the device!



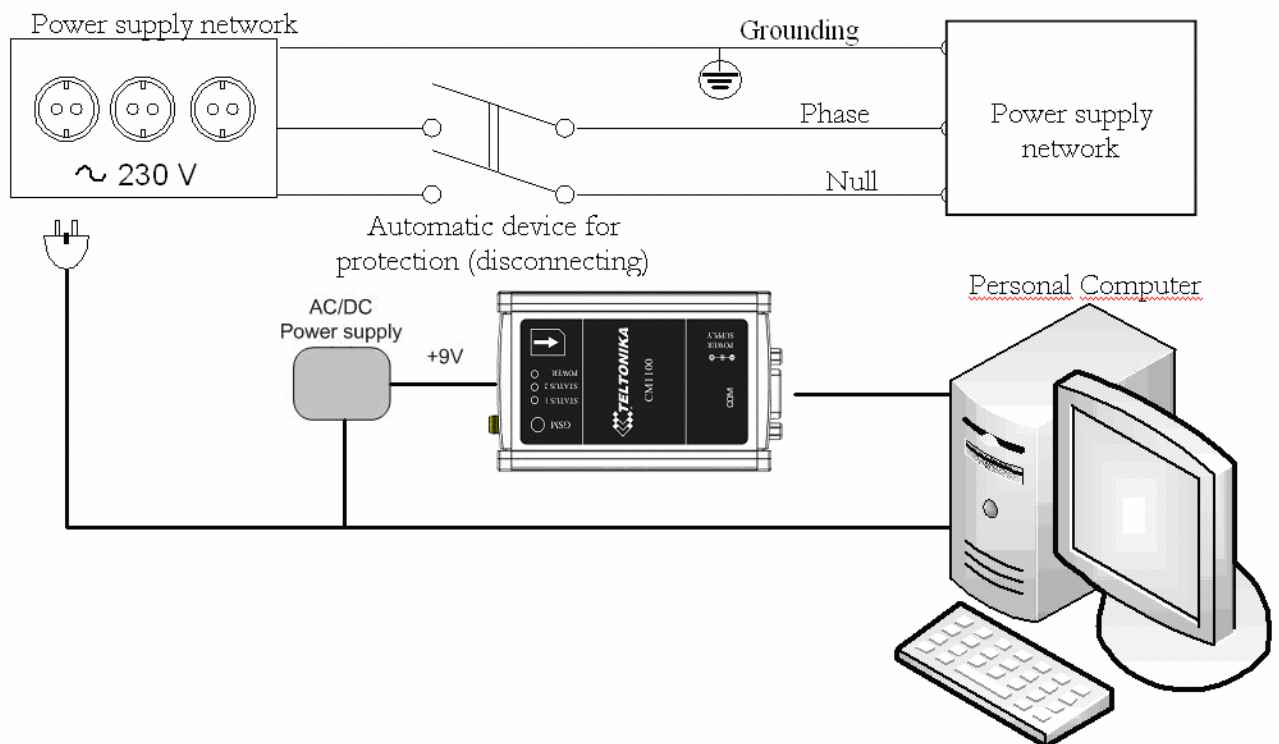
To avoid burning and voltage caused traumas of the personnel working with the device, please follow these safety requirements.

The device requires 9V power supply. The PC, to which the device “ModemCOM/G10” is to be connected, must have a COM port. Nominal power supply voltage is 9 V. Available power supply source range is 6 V ... 32 V.



The PC and power supply source, to which the device "ModemCOM-TM2" is connected should satisfy LST EN 60950-1 standards. The device can be used with the first (Personal Computer) or the second (Notebook) computer safety class.

In the installation place and supply circuits the protective devices should be tooled up (bipolar release device) which will protect the device from short-circuit and grounding troubles (Picture 1.1). The power of the release device should satisfy the power of connected to it devices. The interstice between release contacts should not be less than 3mm. The power supply network should be installed near device on easily accessible place.



Picture 1.1. Scheme for safe connection of the device

Full disconnection of the device is performed by pulling out the constant current DC plug from the device.

Data transfer cable for connection to another device must not be longer than 2 meters.

Maintenance of the device:

If the device starts working faulty only qualified personnel may repair this product. We recommend dismantling the device and forwarding it to repair center or to manufacturers. No exchangeable parts in the device.



To avoid dangerous voltage effect, the power supply and the PC must be disconnected from the electric network before starting dismantling it.

To use the device needed:

AC/DC supply source. The power supply should be 6V@580mA to 32V@108mA.

3. LEGAL NOTICE

Copyright © 2008 TELTONIKA Ltd.

All rights reserved. Reproduction, transfer, distribution or storage of part or all of the contents in this document in any form without the prior written permission of TELTONIKA Ltd is prohibited.

Other product and company names mentioned herein may be trademarks or trade names of their respective owners.

4. INTRODUCTION

This document will provide you with the instructions how to install and use „ModemCOM/G10“ and its software.

„ModemCOM/G10“ is a device designed for data transmission via GSM Network. The design of this modem enables the connection to your PC through COM interface. „ModemCOM/G10“ supports the following data-bearers: GPRS, CSD, CSF and SMS.

5. PACKAGE CONTENTS

„ModemCOM/G10“ is supplied to clients in carton with all contents, which are needed for connection to PC and normal work.

Package contents:

- 1) „ModemCOM/G10“ modem;
- 2) RS232 connecting cable;
- 3) CD with User's Guide, drivers and Software;
- 4) External GSM antenna (just upon special orders);
- 5) AC/DC mains adapter.

Notice: the producer does not provide a SIM card among other items of a package, which is necessary for connection to GSM Network! You can obtain a SIM card from your local GSM service provider!

If any of the components is missing please contact your local distributor.

6. TECHNICAL SPECIFICATIONS

6.1 Data transferring

„ModemCOM/G10“ supports bearers presented below. Which data type is used depends on GSM operator and data transfer capacity in the chosen GSM Network.

- GPRS class 10 (class B);
- CSD;
- CSF;
- SMS textual messages.

6.2 Mechanical specifications

„ModemCOM/G10“ housing is made of metal. It is light and durable – suitable for using in home, office or industrial environment. The external dimensions and measures of the unit casing are: 100*60*31 mm.

6.3 Electrical and operating specifications

Acceptable voltage range is (6 ÷ 32)V DC. 9 V is a nominal value. The PC the „ModemCOM/G10“ modem is connected to must have a RS232 (COM) interface.

Note: The device must be powered with AC/DC adapter provided by manufacturer.

Electrical parameters of the device are shown in the Table 1.

Table 1. Electrical parameters of the device

Parameter	Min	Typical	Max
Power Supply	+6V \approx 0.58A	+9V \approx 0.39A	+32V \approx 0.1A
Average Power consumption	-	480 mW	-
Maximum Power consumption ¹	-	3500 mW	-



Operating conditions and other parameters are shown in Table 2.

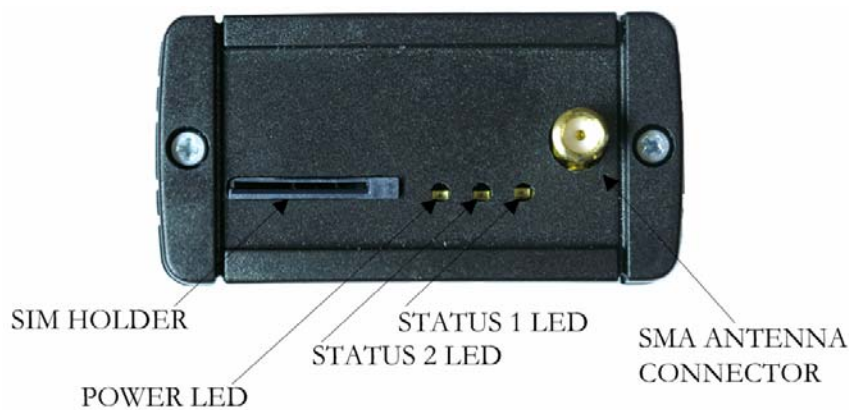
Table 2. Operating conditions

Parameter	Min	Typical	Max	Meas. Units
Weight (modem only)	-	85 ± 10	-	g
Recommended operating temperature	+15	-	+35	°C
Marginal operating temperature	-20	-	+55	°C
Storage temperature	-40	-	+85	°C

Notice: if the settings outreach the characteristics given above the device can be damaged!

6.4 Indication

On the „ModemCOM/G10“ modem were integrated 3 indicators: „POWER“ and 2 „STATUS“ indicators. They are located on the side of device.



A LED indicator “Power“ is located on the side of ModemCOM/G10.

“Power“ LED’s Status	Modem status
„Power“ LED is on	Modem power supply is on
„Power“ LED is off	Modem power supply is off



A LED indicators “Status“ are located on the side of ModemCOM/G10.

“Status“ LEDs	LED Status	Modem Description
STATUS 1 (Green)	ON	Modem ready
STATUS 1 (Green)	Slow blink	Initialization
STATUS 1 (Green)	Double blink	Limited service PIN/PUK required
STATUS 2 (Orange)	Continuously blinking	Network absent
STATUS 2 (Orange)	Slow blink	GPRS fail
STATUS 2 (Orange)	Double blink	No SIM



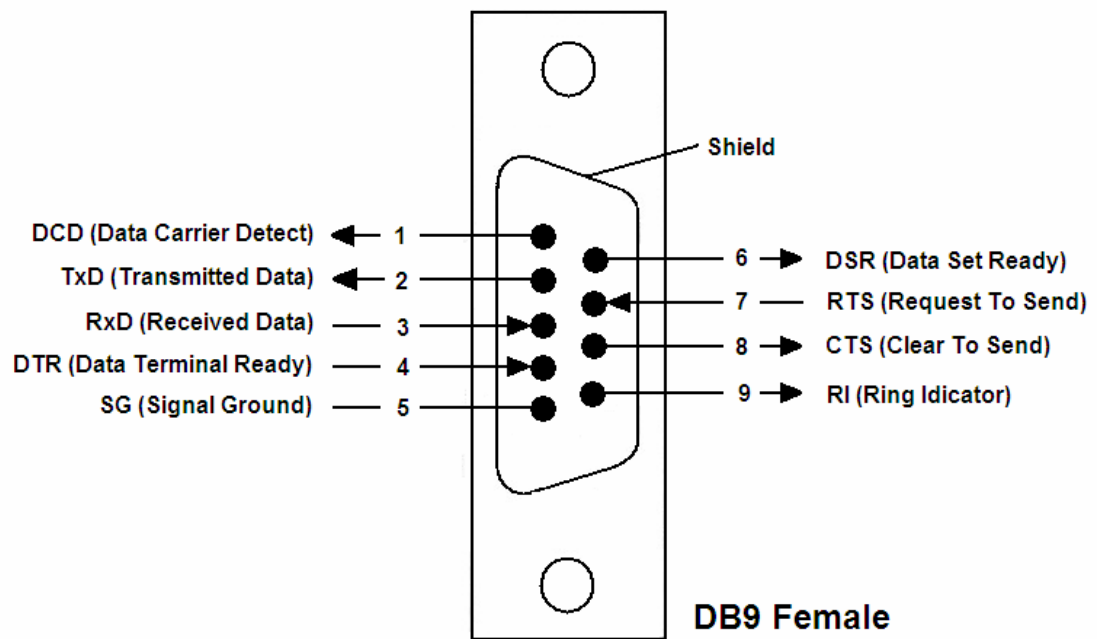
RS232 (COM) CONNECTOR POWER CONNECTOR

Picture 2. Side view of „ModemCOM/G10“

Connectors:

- DB9 female for connection to the device;
- 3,5 mm/1,35 mm power supply connector;
- SIM card slot.

6.5 Pins of DB9 (COM) connector



Picture 6.5.1. Pins of COM port



7. MODEM SETUP

7.1 Connecting to the computer

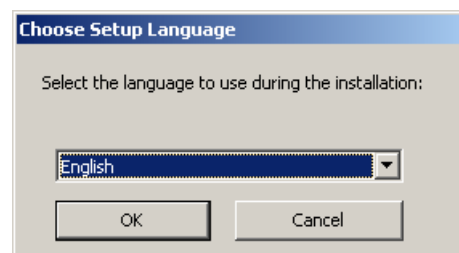
- 1) Turn OFF your computer
- 2) Insert the SIM card into modem. Follow the instructions on the device sticker. Make sure, the SIM card is pushed inside till it fixes.
- 3) Plug DB9 connector of the serial (RS232) cable into the modem.
- 4) Plug another end of the serial cable to one of the COM ports of PC.
- 5) Plug in the AC/DC adapter to power supply socket of “ModemCOM/G10”.
- 6) Plug in the AC/DC adapter to power supply network.
- 7) Turn ON your computer

7.2 Installation of “Modem Control Tool”

Step 1 - Open the “ModemCOM/G10” Pack, take only the CD and insert it into the PC CD Drive.

Step 2 – Wait till the system displays the screen “Select Setup Language”.

Step 3 - Select English and Click “OK” button.

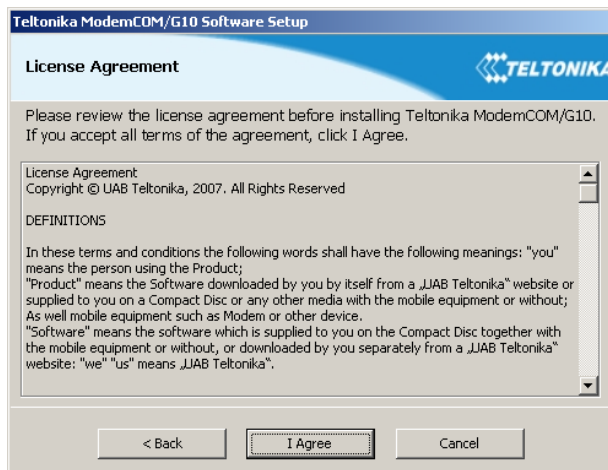
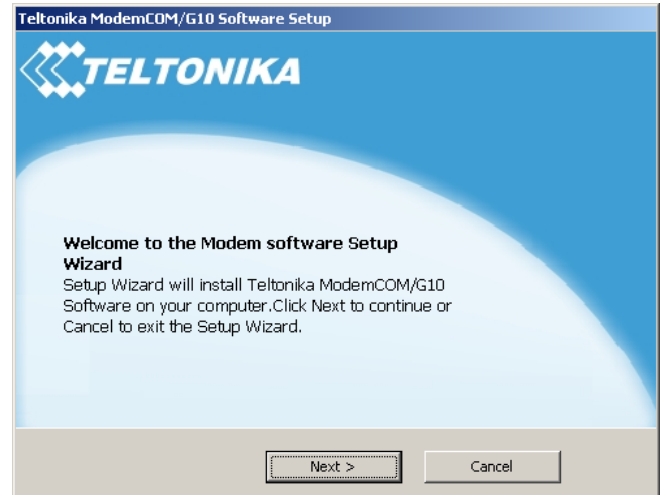


Step 4 -Click “Install” button



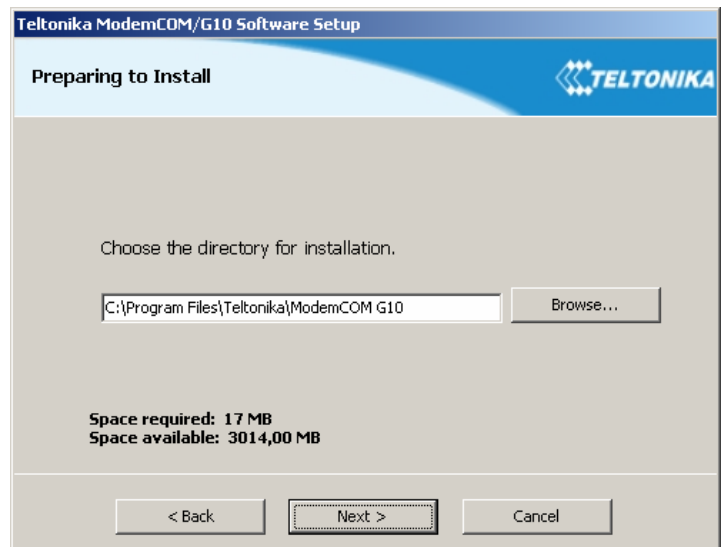


Step 5 – Click “Next” button



Step 6 – Click “I Agree” button if agree with License Agreement.

Step 7 - Click “Next” button



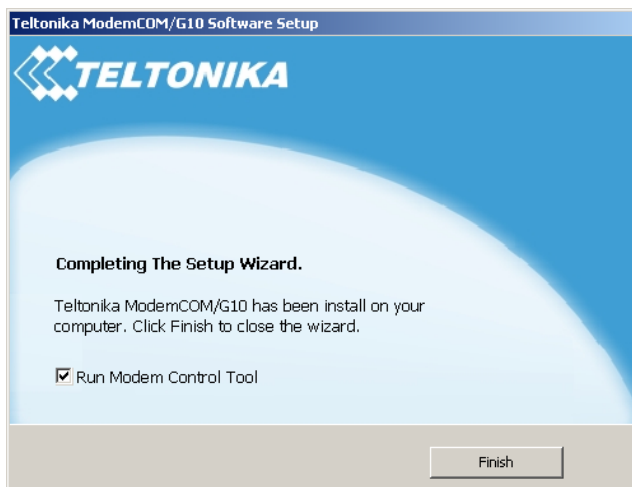


Step 8 - Enter dial-up connection parameters and press "Next" in the opened dialog.

Note: APN, user name and password are to be asked to your GSM operator!

Step 9 - Click "Install" button.

Step 10 – Connect the modem to the PC and click "OK" button.



Step 11 - Press “Finish” in the opened dialog box “Modem Control tool Setup”. Congratulations the installation is done.

7.3 Setting up an Internet connection

In this chapter we will provide you with general information and procedures necessary for setting up an Internet connection in your PC. When using “Modem Control Tool”, the Internet connection settings are determined automatically.

Before you begin make sure that:

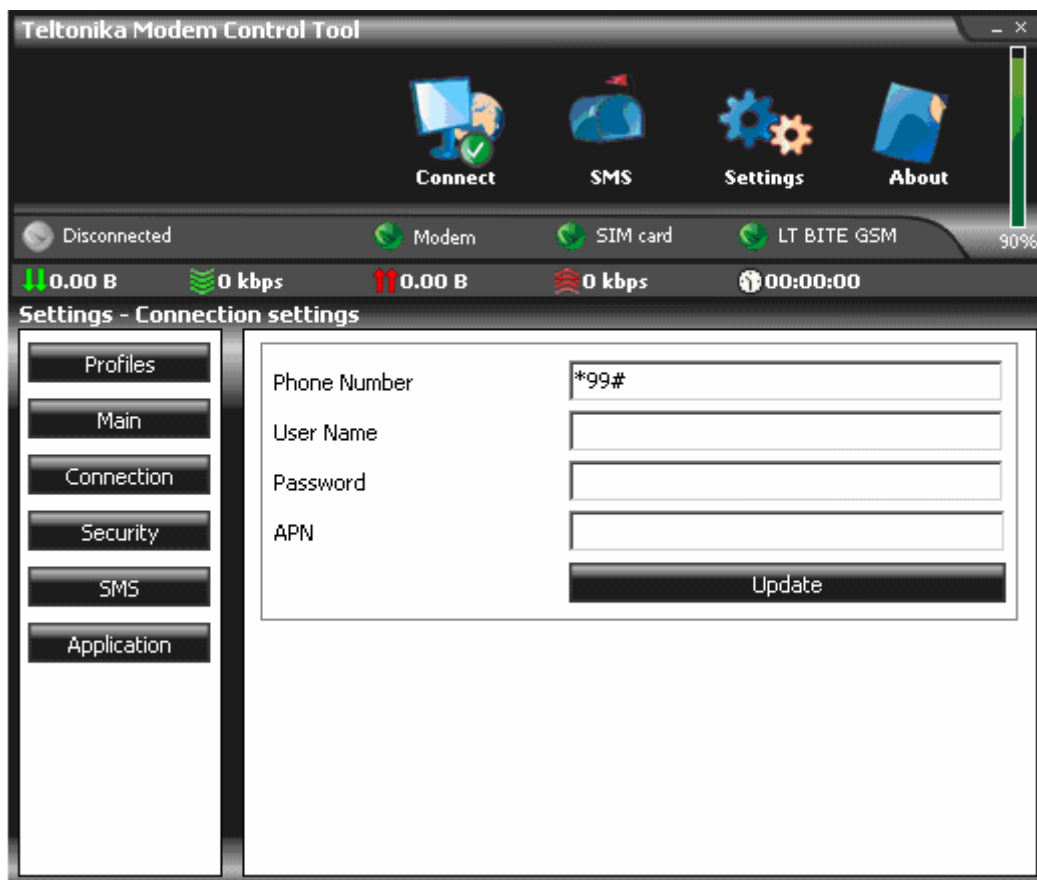
- You have a GSM SIM card with activated data transfer service;
- “ModemCOM/G10“ is ready to work – SIM card is pushed in, the device is correctly connected to the PC, the drivers are properly installed;
- TCP/IP protocol is installed on your PC.

When you are using “ModemCOM/G10“ you can get access to the Internet via one of this data transmission types:

- GPRS packet data transfer. In this case you have to know “APN”, “user name and password”;
- CSD data transfer. You have to know a phone number of a dial-up server.

If GPRS data transfer is used, you have to set up an APN, if needed, user name and password.

- 1) Start “Modem Control Tool”. If needed the PIN code, enter it;
- 2) Click “Settings” button
- 3) Select “Connection”;
- 4) Enter the APN;
- 5) Enter the Phone Number [*99#], if it is not entered automatically;
- 6) If needed, enter the User name and Password;
- 7) Click “Update”.



Note: For APN, user name and password – ask your GSM operator!

Getting connected to the Internet:

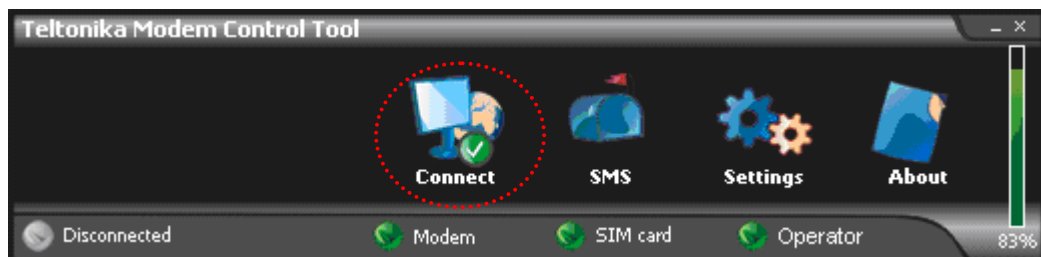
1. Start “Modem Control Tool” program. The program can be started from the PC desktop (or “Start -> Programs -> Teltonika -> ModemCOM G10 -> Modem Control Tool G10”) while clicking on the shortcut. When the shortcut will be clicked, “Modem Control Tool” dialog box will be opened.



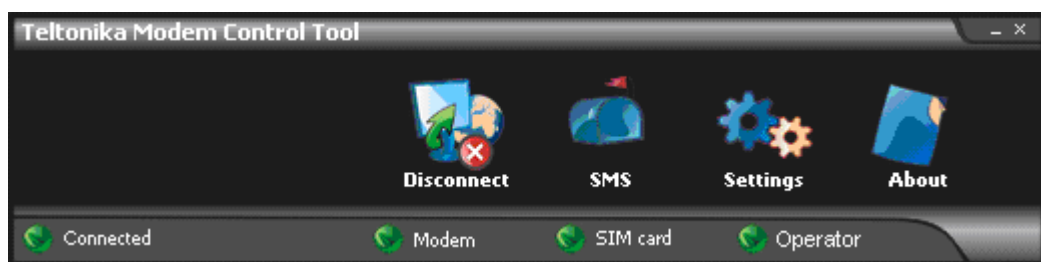
2. The program should automatically detect a connected modem. If you start the program before connect modem, you have to wait till modem will be ready to work. If the program does not detecting your modem restart the program; As well you may perform “Scan for hardware changes” in some computers.



3. To connect to the Internet, click “Connect” button:



4. The modem starts connecting to Internet after clicking on this button. When the modem connected to Internet, you will see message “Disconnect”;



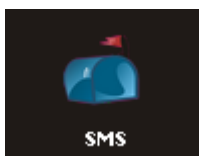
If you can not connect the Internet using Internet Explorer after using Modem follow these steps, click Start → Settings → Control Panel → Internet Options. Select the box “Connections” in the appeared dialogue box “Internet Properties”.



Select dial-up pictogram in the “Dial-up and Virtual Private Network settings” window and click “Set Default” button, then chose “Always dial my default connection” and click “Apply” and “OK” buttons. Now try to connect to Internet again.

7.4 Sending Short Text Messages (SMS)

1. Using „ModemCOM/G10“ it is possible to send and receive short text messages (SMS). It is obligatory to disconnect from the Internet, before starting to use this „ModemCOM/G10“ function.
2. Before sending SMS messages you have to check number of messages sending center. Click “Program Settings” and “SMS Settings”. In the window of SMS Settings should be automatically entered number of messages sending center if it not entered, enter it. This Number you can ask from your GSM operator;
3. Click “SMS” button on “Modem Control Tool” window for writing and reading of SMS messages:



4. In the window Message text – you can write your short SMS messages. In the Phone Number square enter phone number with with “+” symbol and code of country. Then click “Send”, and wait for the message: “Message Sent Successful” or “Message Was Not Sent”;



5. Also you can read incoming and sent short SMS messages.

7.5 Changing security settings

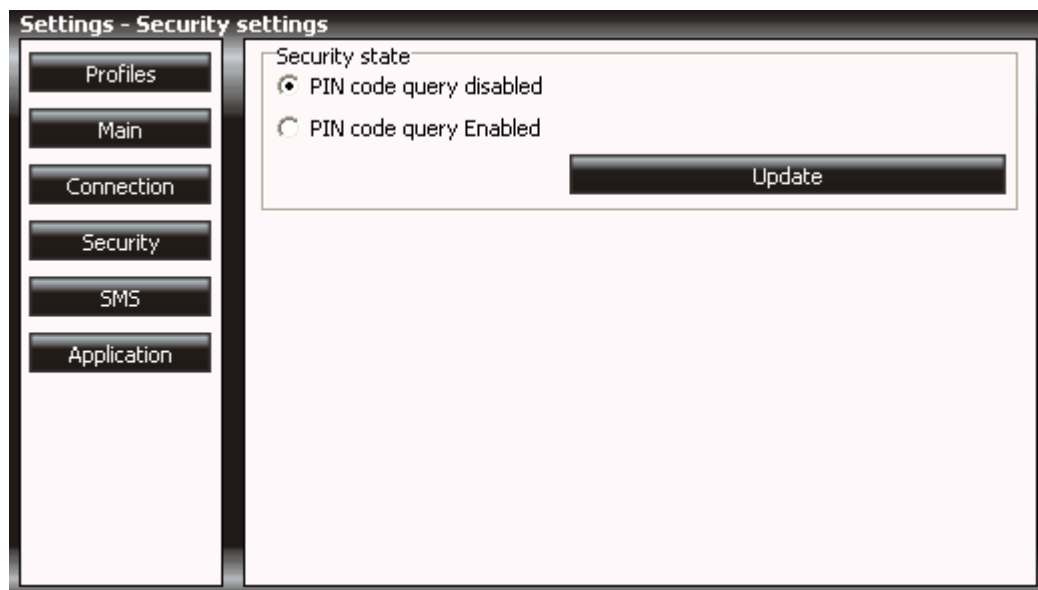
To set ModemCOM/G10 modem parameters or to change them, click **Settings** in the main Modem Control Tool window. If you click **Main** in the **Settings** window, you will be able to choose a modem from the list of modems installed in your PC.

If you click **Connection** in the **Settings** window, you will be able to change the ModemCOM/G10 modem Internet connection parameters.

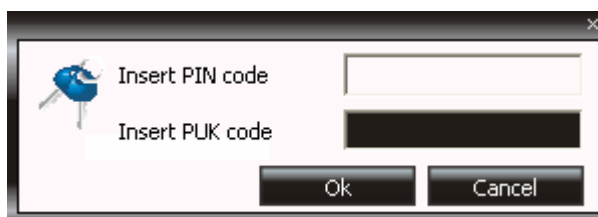
If you click **Settings** → **Security**, a **Security** window will open where you can enable or disable PIN code query. To set ModemCOM/G10 modem parameters or to change them, click **Settings** in the main Modem Control Tool window. If you click **Main** in the **Settings** window, you will be able to choose a modem from the list of modems installed in your PC.

If you click **Connection** in the **Settings** window, you will be able to change the ModemCOM/G10 modem Internet connection parameters.

If you click **Settings** → **Security**, a **Security** window will open where you can enable or disable PIN code query.



To enable PIN code query, choose **PIN Code Query Enabled** in **Security State** frame and click **Update**. A pop-up window will appear. Enter the PIN code of your SIM card in the **Insert Pin Code** field and click **OK**.

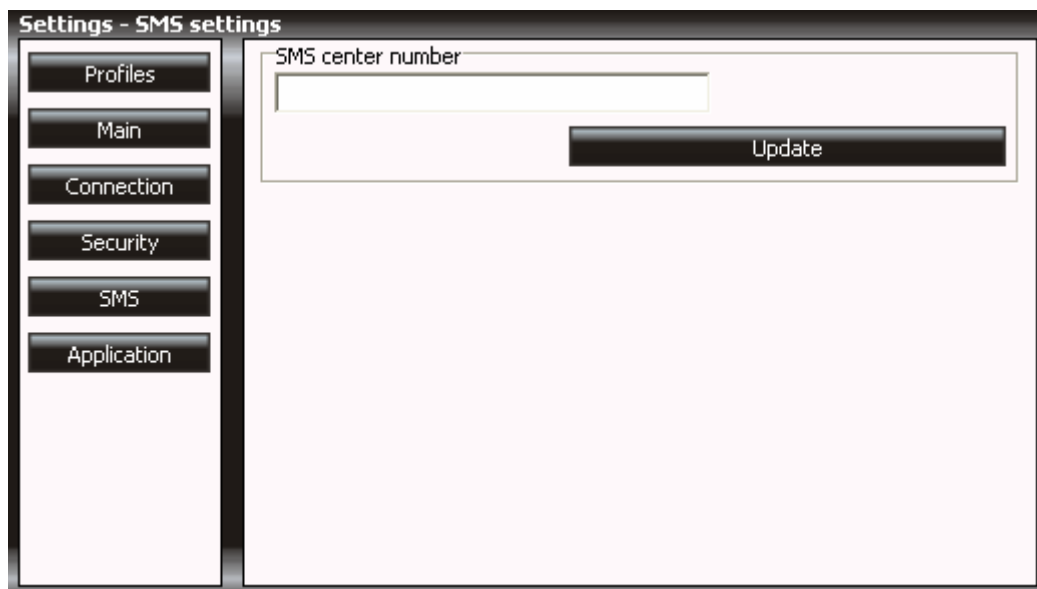


Now, the Modem Control Tool program will ask for the PIN code each time you connect the ModemCOM/G10 modem to your PC COM port

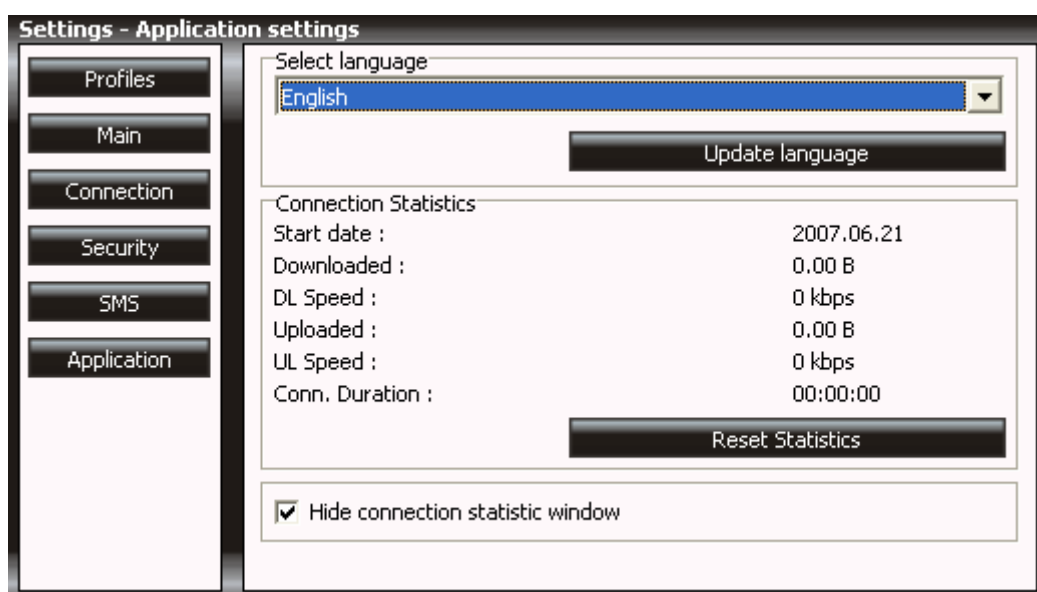
To disable PIN code query, choose **PIN Code Query Disabled** in **Security State** frame and click **Update**.



SMS center number is shown in **Settings** → **SMS**.

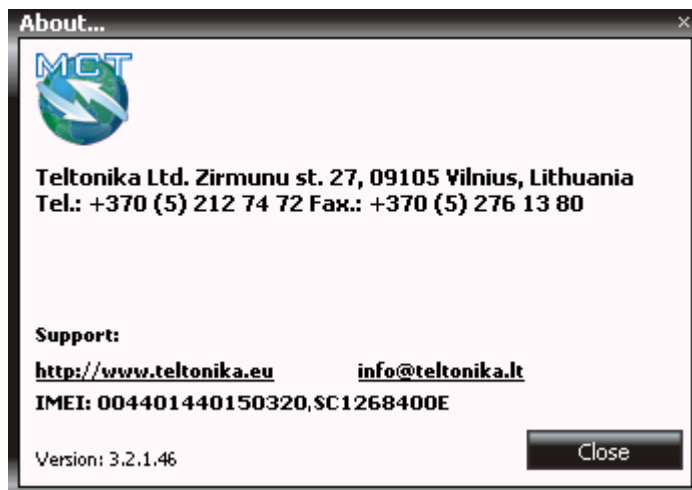


To change Modem Control Tool program language, go to **Settings** → **Application**. In **Application** window choose the language from **Set Language** field and click **Update Language**.





Click **About** to see the Modem Control Tool program version and other Information.



8. ACRONYMS

AC/DC	Alternating Current/Direct Current
APN	Access Point Name
CSD	Circuit Switched Data
CSF	Circuit Switched Fax
GPRS	General Packet Radio Service
GSM	Global System for Mobile communications
IMEI	International Mobile Equipment Identity
ISP	Internet Service Provider
LED	Light Emitting Diode
OS	Operating System
PDP	Packet Data Protocol
PIN	Personal Identification Number
SIM	Subscriber Identity Module
SMS	Short Message Service
TCP/IP	Transmission Control Protocol/Internet Protocol

9. TECHNICAL SUPPORT



This sign on the package means that it is necessary to read a User Manual, which is on the CD before you start using the device.



This sign on the package means, that used electronic and electric equipment should be stored separately.

If you have faced some problems using the device, which you are not able to solve by yourself, you are always welcome to address our technical support department by e-mail support@teltonika.lt. We will be very glad to help you.