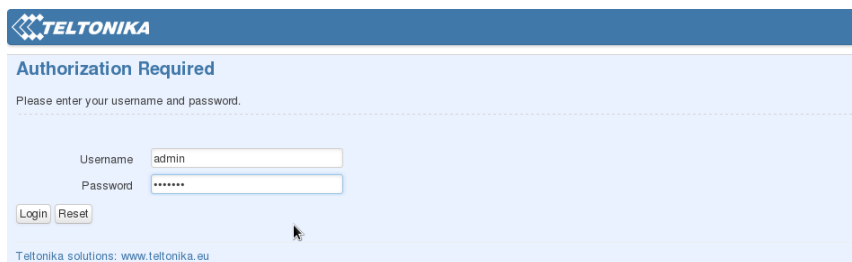


Login to device

1. To enter router's Web interface type <http://192.168.1.1> in your internet browser.
2. Use the following parameters when prompted for authentication:

User name: **admin**
Password: **admin01**



TELTONIKA

Authorization Required

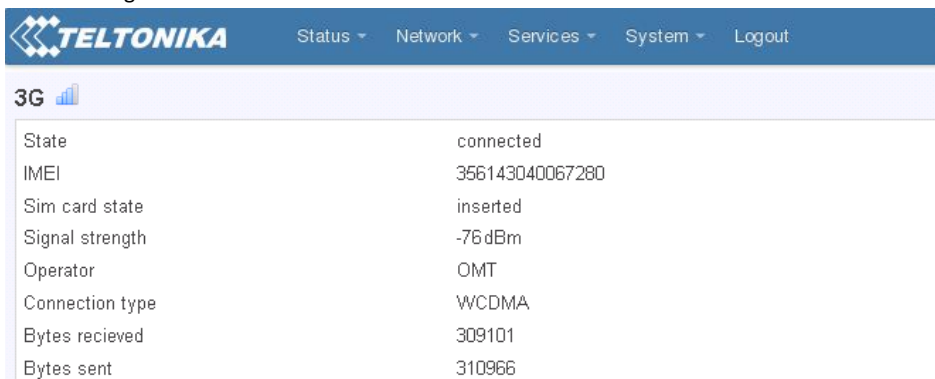
Please enter your username and password.

Username:

Password:

Teltonika solutions: www.teltonika.eu

3. **Configuration Wizard** will start after logging in. It is necessary to complete **Configuration Wizard** to setup router to correct mode. You can leave default settings but it is strongly recommended that you change the password and enable Wireless Security.
4. Go to **Status -> Network Information** and pay attention to **Signal Strength**. To maximize the performance try adjusting antennas or changing location of your device to achieve best signal conditions.



TELTONIKA		Status	Network	Services	System	Logout
3G						
State	connected					
IMEI	356143040067280					
Sim card state	inserted					
Signal strength	-76 dBm					
Operator	OMT					
Connection type	WCDMA					
Bytes recieved	309101					
Bytes sent	310966					



This sign on the package means that it is necessary to read the User's Manual before you start using the device.



This sign on the package means that all used electronic and electric equipment should not be mixed with general household waste.

Please visit our web site www.teltonika.lt for complete user manual

CE 1304



RUT500 HSPA+ Router



Quick start guide v1.7



Front Panel

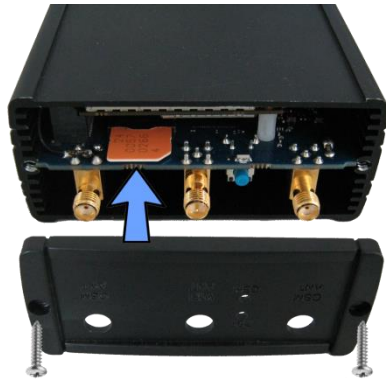


- 1 Power socket
- 2,3,4 LAN Ethernet ports
- 5 WAN Ethernet port
- 6 Power LED
- 7,8,9 LAN LEDs
- 10 WAN LED

*- Unavailable in alternate model.

Hardware installation

1. Remove back panel and insert SIM card which was given by your ISP (Internet Service Provider). Correct SIM card orientation is shown in the picture.



2. Attach GSM main and Wi-Fi antennas.
3. Connect the power adapter to the socket on the front panel of the device. Then plug the other end of the power adapter into a wall outlet or power strip.
4. Connect to the device wirelessly (SSID: **Teltonika**) or use Ethernet cable and plug it into any LAN Ethernet port.

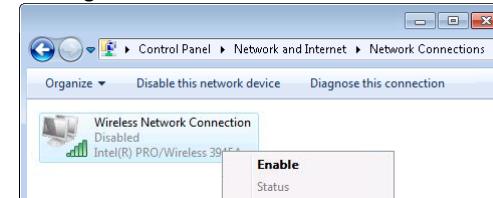
Back Panel



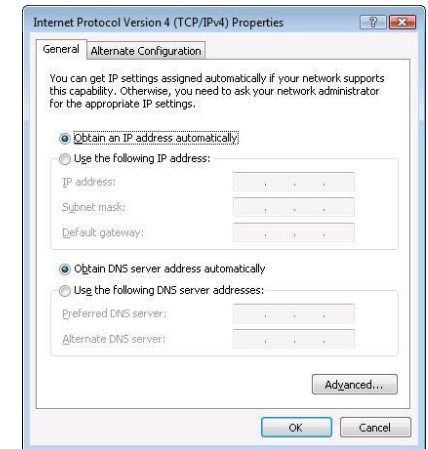
- 1 GSM main antenna connector
- 2 Wi-Fi antenna connector
- 3 GSM auxiliary antenna connector *
- 4 Reset button
- 5 GSM LED

Configure your computer

1. Enable the wireless network connection. (Go to **Start > Control Panel > Network and Internet > Network and Sharing Center**. In the left pane click **Change adapter settings** link. Right click on **Wireless Network Connection** and select **Enable**).



2. Setup wireless network adapter on your computer (Right click on **Wireless Network Connection** select, choose **Internet Protocol Version 4 (TCP/IP)** and click **Properties**)



3. Select **Obtain IP address automatically** and **Obtain DNS server address automatically** if they are not selected. Click **OK**.

4. Right click on **Wireless Network Connection** and select **Connect/Disconnect** to see available wireless networks.



5. Choose the wireless network **Teltonika** from the list and press **Connect**.

